

10. COP-PAS LEX (Passive Bus Coupler)

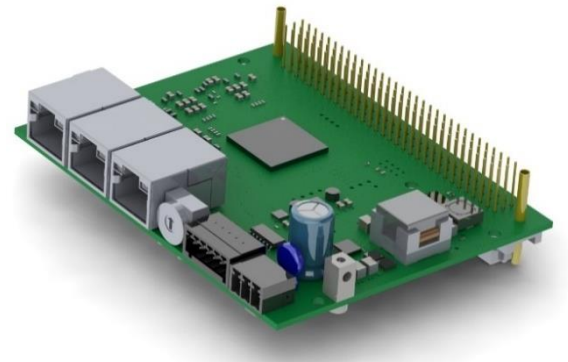
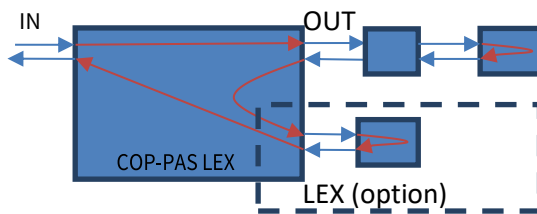
COP-PAS 611143600

The COP-PAS is used as a GinLink bus coupler. Any type of COP node can thus be integrated into and operated in a GinLink system. Addressing is done via MAC address.



COP-PAS LEX 611143630

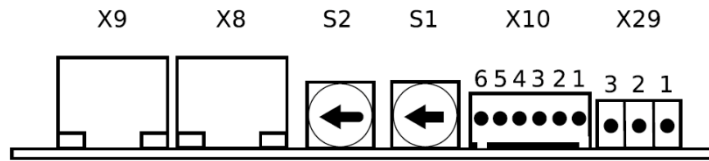
New hardware revision (from A) with an extra connector for GinLink extension. It replaces the old version 0. Link expander:



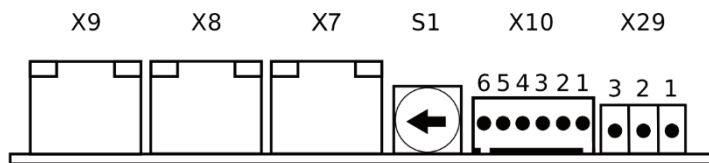
10.1. Technical Specifications

Bus Coupler		
Interfaces	GinLink to COP bus	
	GinLink expander	
Maximum COP bus frequency	16	kHz
Logic Power Supply		
Rated voltage	24 $-20\% +30\%$	V _{DC}
Fuse	8A, fast acting	
Module		
Maximum power consumption @24V card power supply	200	mA

10.2. Pin Assignment



COP-PAS HW Rev0



COP-PAS LEX HW RevA

Identification	Description	Description
X9	GinLink in	GinLink in
X8	GinLink out	GinLink out
X7	-	GinLink LEX
S2	Address adder	-
S1	Address adder	Address adder

Identification	Pin No.	Description
X10	1	Tx
	2	Rx
	3	-
	4	-
	5	5V
	6	GND

Identification	Pin No.	Description
X29 Power supply	1	24V
	2	GND
	3	Earth

10.3. Options Rotary Switch

The rotary switch S1 at COP-PAS LEX is used as options rotary switch

Switch Position	LEX	Description
0x0; 0x2 bis 0xF		COP-PAS
0x1	x	COP-PAS with GinLink extension (LEX)

10.4. Available Options

Item Number	Label	Option	Description
611143600 <i>no longer available, but possibly still repairable</i>	COP-PAS		Passive GinLink Slave bus coupler for COP modules, 5VPS, 3.3VPS
611143630	COP-PAS	LEX	Passive GinLink Slave bus coupler for COP modules, 5VPS, 3.3VPS, extra Ethernet connector for GinLink extension