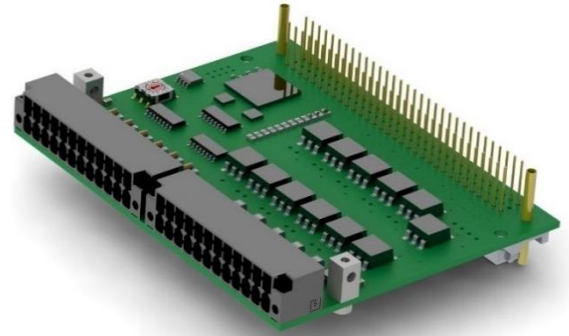


20. COP-IIO (Isolated Digital IO)

COP-IIO 611246500

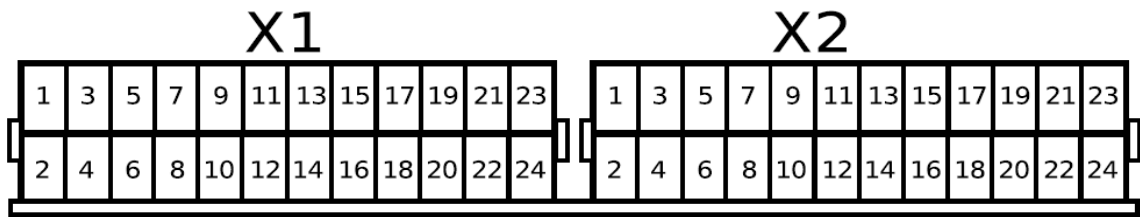
The COP-IIO card offers a total of 12 isolated inputs and 12 isolated outputs. The IOs are galvanically isolated from power supply of the COP node. The card can be used, for example, when inputs or outputs have a different potential than power supply of the the COP node itself.



20.1. Technical Specifications

Isolated Inputs		
Number of inputs	12	
Maximum input voltage	32	V _{DC}
Switching threshold	10± 10%	V _{DC}
Input low-pass filter cut-off frequency	800	Hz
Isolated Outputs		
Number of outputs	12	
Maximum output current per output	1	A
Maximum switching voltage	32	V _{DC}
Module		
Maximum power consumption at 24V node power supply	200	mA

20.2. Pin Assignment

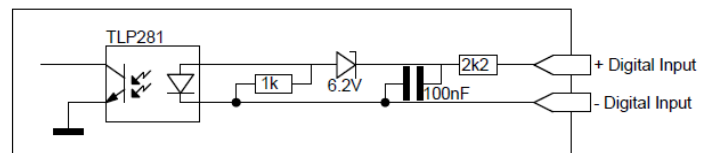


X1					
No.	Dir	Id.	Id.	Dir	No.
2	In	+D01	+D00	In	1
4	In	-D01	-D00	In	3
6	In	+D03	+D02	In	5
8	In	-D03	-D02	In	7
10	In	+D05	+D04	In	9
12	In	-D05	-D04	In	11
14	In	+D07	+D06	In	13
16	In	-D07	-D06	In	15
18	In	+D09	+D08	In	17
20	In	-D09	-D08	In	19
22	In	+D11	+D10	In	21
24	In	-D11	-D10	In	23

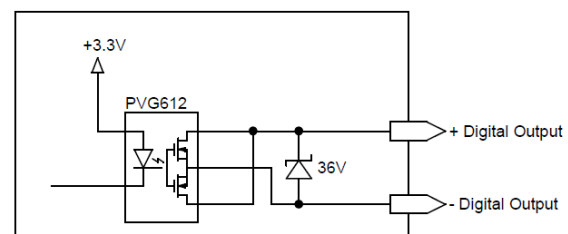
X2					
No.	Dir	Id.	Id.	Dir	No.
2	Out	+D01	+D00	Out	1
4	Out	-D01	-D00	Out	3
6	Out	+D03	+D02	Out	5
8	Out	-D03	-D02	Out	7
10	Out	+D05	+D04	Out	9
12	Out	-D05	-D04	Out	11
14	Out	+D07	+D06	Out	13
16	Out	-D07	-D06	Out	15
18	Out	+D09	+D08	Out	17
20	Out	-D09	-D08	Out	19
22	Out	+D11	+D10	Out	21
24	Out	-D11	-D10	Out	23

20.3. Hardware Description

Digital inputs



Digital outputs



20.4. Available Options

Item Number	Label	Option	Description
611246500	COP-IIO		12 x isolated digital inputs and outputs