

## Power Supply for AC-Servo

## INFO-ACP<sub>r</sub>



Power Supply  
for  
INFO-ACS<sub>r</sub>

### Technical Data

#### Supply

- 230VAC, 1-Phase

#### Intermediate Circuit Voltage

- 325VDC

#### Power

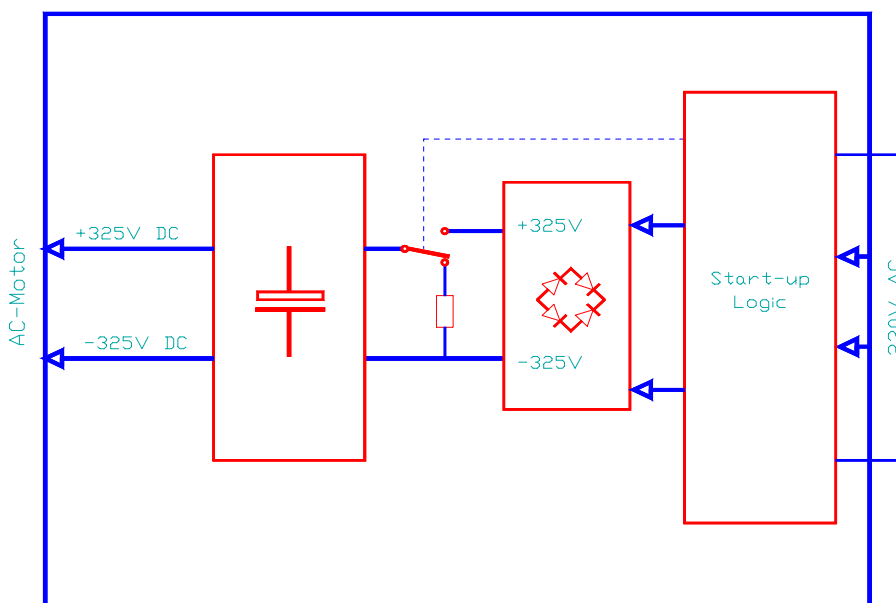
- 9kW Continuous power.

#### Rectifier

- The rectifier diodes can provide up to 30A continuous power.

The power supply INFO-ACP<sub>r</sub> generates the 325VDC intermediate Voltage required by the INFO-ACS<sub>r</sub> servo controllers. The card is protected against

overvoltage and overcurrent. At most ten servo controllers INFO-ACS<sub>r</sub>-6A/10A or five INFO-ACS<sub>r</sub>-20A can be supplied.



Order-Nr. INFO-ACP<sub>r</sub> 97247

# INFO-ACP<sub>r</sub>

# Power Supply for AC-Servo

## Function

### Power Unit

The power unit is designed for 230VAC 1-Phase operation. The rectifier diodes can supply permanent current up to 30A. (Cooling is necessary!)

The rack must be equipped with a line filter, straight after the connection of the supply.

### Power On delay

Power On delay (Soft Start) needs approx. 1s in order to load the condensers 2700µF. After this a relay contact bypasses the loading resistors. (NTC, 22Ω).

### Controller Enable

After the load-time of 1s, the motors can be switched on. In case of switching on the motors before the relay has interconnected the load sequence, the power unit can be destroyed!

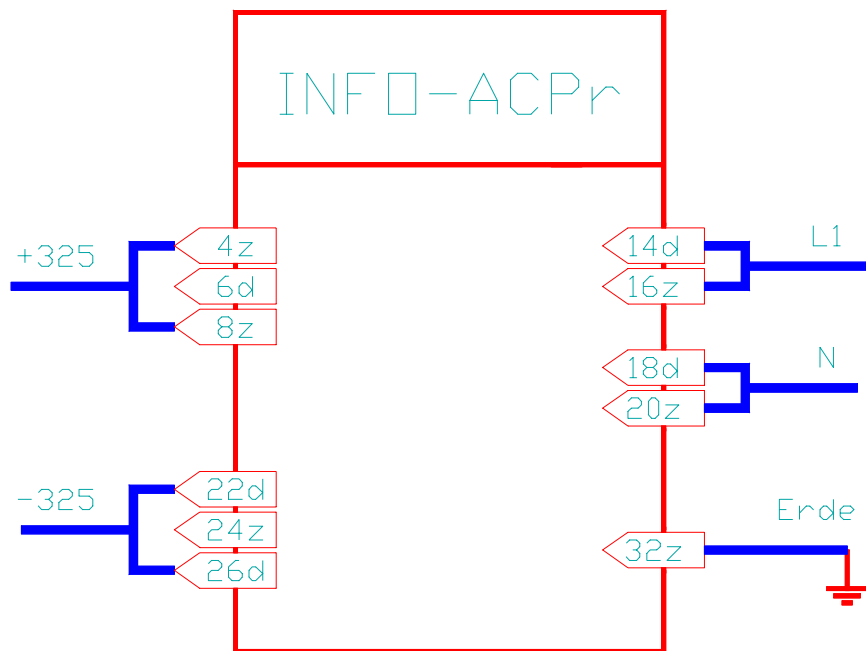
### Loss of Mains

During loss of Mains, a relay switches a supplementary discharging resistor (10kΩ) so that the EC are discharged faster.

### Breake

A brake resistance is NOT available. If required an additional brake modul has to be connected.

## Connecting Example



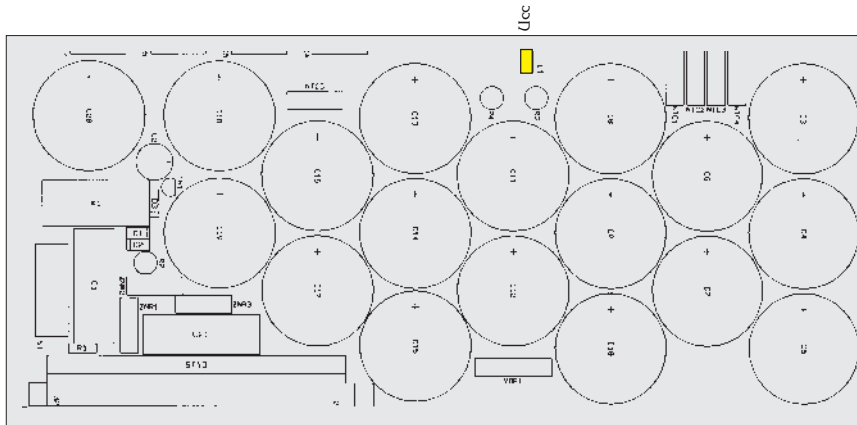
	d	z
4		O + 325 V
6	O + 325 V	
8		O + 325 V
10		NC
12		NC
14	I L1	
16		I L1
18	I N	
20		I N
22	O - 325 V	
24		O - 325 V
26	O - 325 V	
28		NC
30		NC
32		O ERDE

### Connector 2

90° angled  
DIN 41612, Typ H-15  
6,3mm Connector pins

## Equipment

## Specifications



### Supply

- 230VAC, 1-Phase, +/-10%

### Climatic conditions

- ambient-temperature:
  - bearing: -20...+80°C
  - operating: 0 ... +45°C
- card temperature operating: 0...+70 °C
- relative humidity no condensation: 80%

### Intermediate Circuit Voltage

- 325VDC

### Power

- 9kW Continuous power.

### Rectifier

- The rectifier diodes can provide up to 30A continuous power.

### Fuse

- A slo-blo 10A fuse is on the card.
- The pre-fuse of the AC power supply must be 16A at maximum.

Customer-specific Modifications are always available.

### LED (yellow)

The level of the intermediate Voltage  $U_{cc}$  (325VDC) is indicated with the yellow LED.

### Important!

Controller and Power Supply must be plugged in until the yellow LED doesn't shine anymore!

